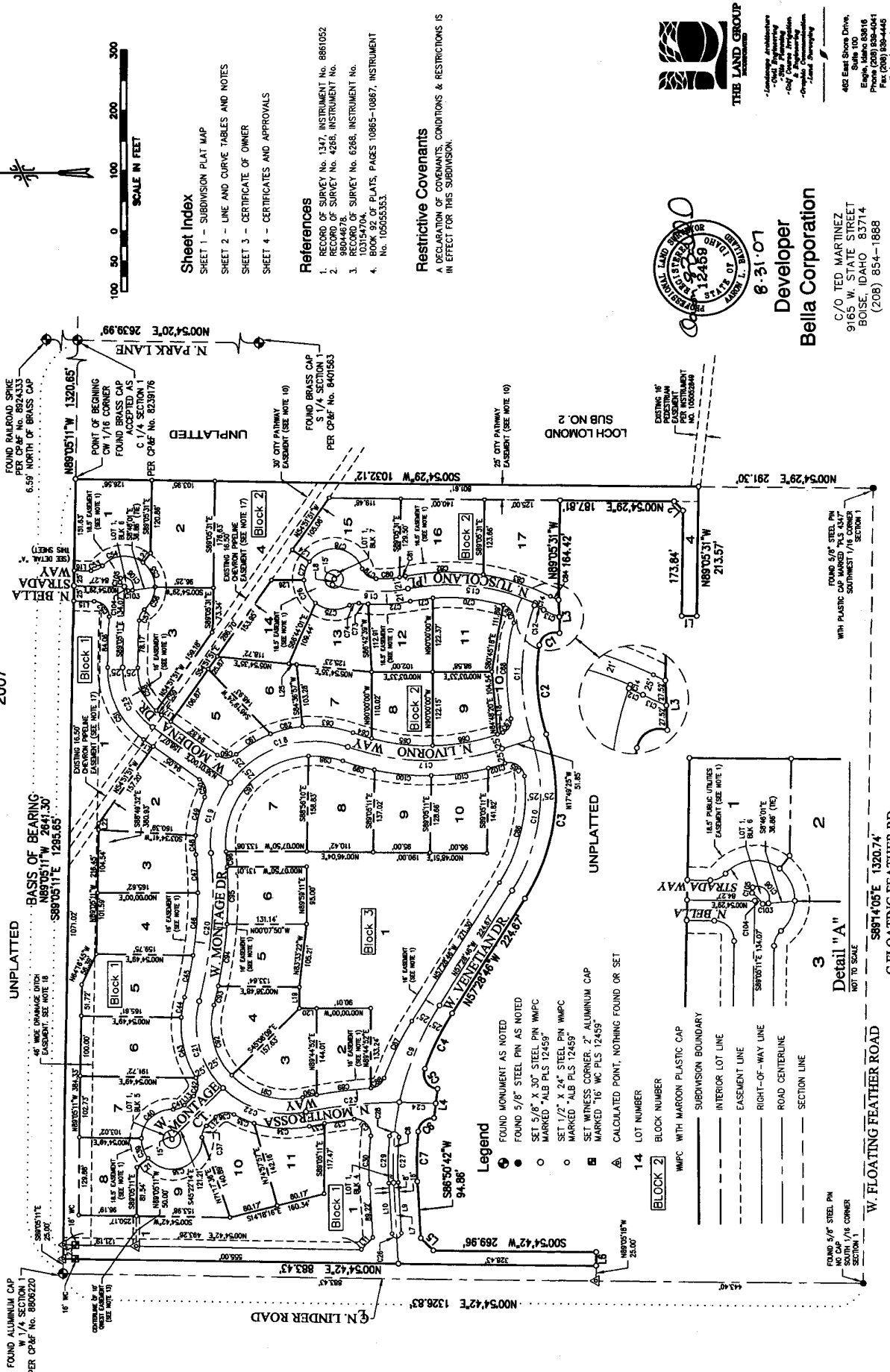


BK 99 PG 12649

Plat Showing

BELLATERRA SUBDIVISION

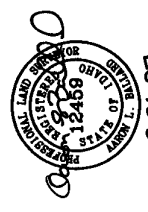
Situated in a Portion of the Northwest 1/4 of Section 1,
Township 4 North, Range 1 West, B.M., City of Eagle, Ada County, Idaho
2007



Sheet Index
SHEET 1 - SUBDIVISION PLAT MAP
SHEET 2 - LINE AND CURVE TABLES AND NOTES
SHEET 3 - CERTIFICATE OF OWNER
SHEET 4 - CERTIFICATES AND APPROVALS

References
1. RECORD OF SURVEY No. 1347, INSTRUMENT No. 8861052
2. RECORD OF SURVEY No. 4286, INSTRUMENT No. 103154704
3. RECORD OF SURVEY No. 6288, INSTRUMENT No. 103154704
4. BOOK 92 OF PLATS, PAGES 10865-10867, INSTRUMENT No. 105055363

Restrictive Covenants
A DECLARATION OF COVENANTS, CONDITIONS & RESTRICTIONS IS IN EFFECT FOR THIS SUBDIVISION.



8-31-07
Developer
Bella Corporation
C/O TED MARTINEZ
9165 W. STATE STREET
BOISE, IDAHO 83714
(208) 854-1888

THE LAND GROUP
A Landmark Architecture
- 2007 Planning
- Civil Design Preparation
- Civil Engineering
- Land Surveying
462 East Chase Drive,
Suite 100,
Eagle, Idaho 83816
Phone (208) 858-4041
Fax (208) 858-4445
www.thelandgroup.com